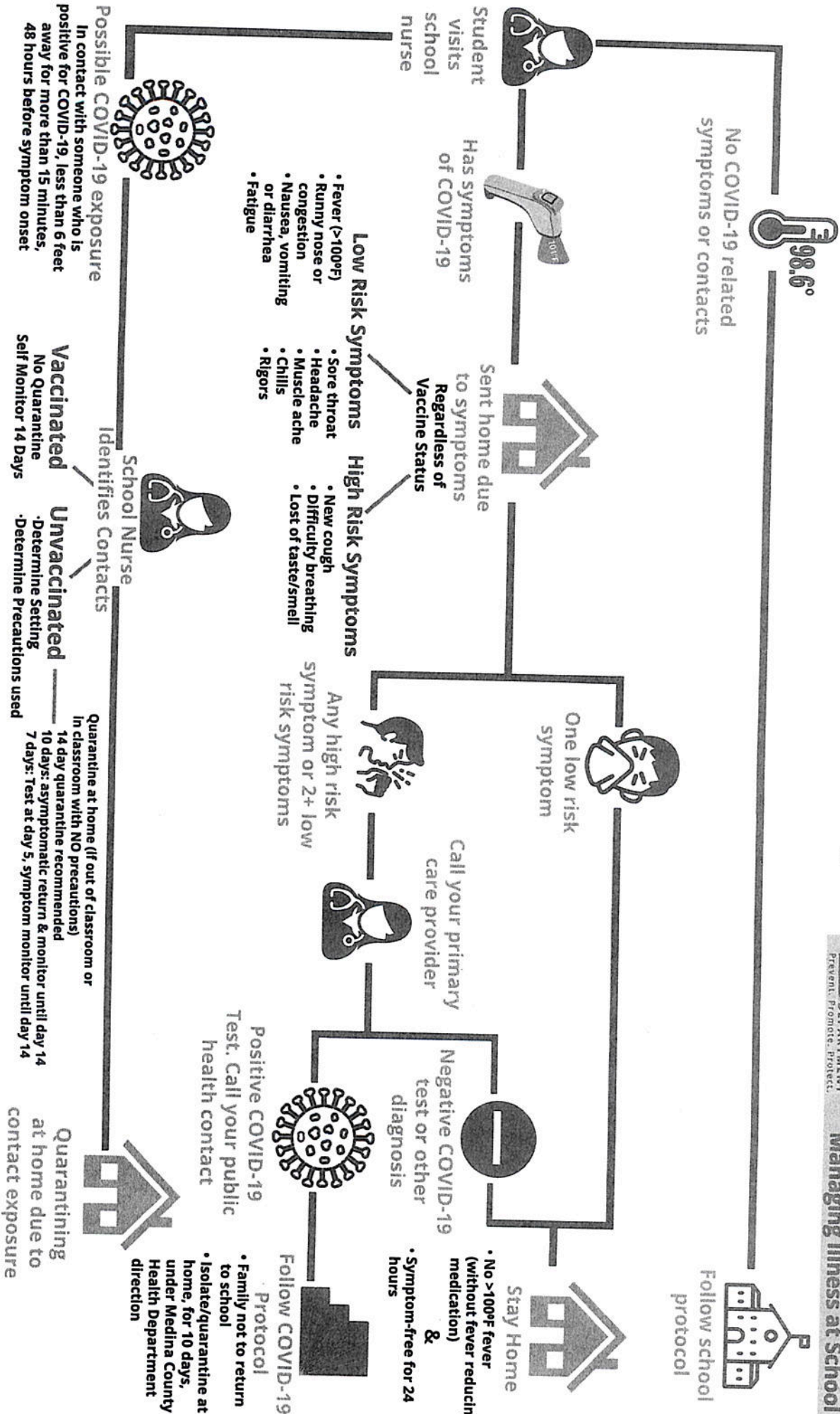


330-723-9688

medinahhealth.org



**Decision Tree for Managing Illness at School**



No COVID-19 related symptoms or contacts



Has symptoms of COVID-19



Sent home due to symptoms of COVID-19 regardless of Vaccine Status

- Low Risk Symptoms**
- Fever (>100°F)
  - Runny nose or congestion
  - Nausea, vomiting or diarrhea
  - Fatigue

- High Risk Symptoms**
- Sore throat
  - Headache
  - Muscle ache
  - Chills
  - Rigors

- High Risk Symptoms**
- New cough
  - Difficulty breathing
  - Lost of taste/smell



Any high risk symptom or 2+ low risk symptoms

One low risk symptom

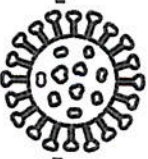
Call your primary care provider



Negative COVID-19 test or other diagnosis

**Stay Home**

- No >100°F fever (without fever reducing medication) & Symptom-free for 24 hours



Positive COVID-19 Test. Call your public health contact

**Follow COVID-19 Protocol**

- Family not to return to school
- Isolate/quarantine at home, for 10 days, under Medina County Health Department direction



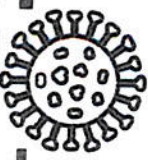
Quarantining at home due to contact exposure

Quarantine at home (if out of classroom or in classroom with NO precautions) 14 day quarantine recommended 10 days: asymptomatic return & monitor until day 14 7 days: Test at day 5, symptom monitor until day 14

**Vaccinated**  
No Quarantine  
Self Monitor- 14 Days

**Unvaccinated**  
Determine Setting  
Determine Precautions used

**Possible COVID-19 exposure**  
In contact with someone who is positive for COVID-19, less than 6 feet away for more than 15 minutes, 48 hours before symptom onset



School Nurse Identifies Contacts